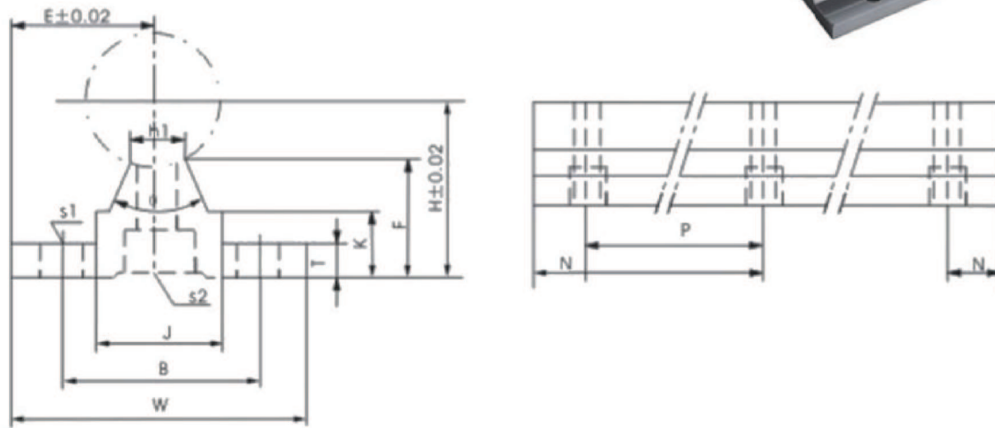


Support Rail Unit SBR



MODEL	SHAFT DIAMETER	MAIN DIMENSIONS									MOUNTING DIMENSIONS				WEIGHT [Kg]	
		H	E	W	F	T	K	J	h1	φ	B	N	P	S1		S2
SBR10	10	18	16	32	13.5	4	8.9	12.4	4.7	80°	22	50	100	4.5	M4	1.2
SBR12	12	2.046	17	34	15	4.5	9.8	15	6	80°	25	50	100	4.5	M4	1.8
SBR13	13	21	17	34	15	4.5	9.8	15	6	80°	25	50	100	4.5	M4	2.1
SBR16	16	25	20	40	17.8	5	11.7	18.5	8	80°	30	50	150	5.5	M5	2.4
SBR20	20	27	22.5	45	17.7	5	10	19	8	50°	30	50	150	5.5	M6	3.3
SBR25	25	33	27.5	55	21	6	12	21.5	8	50°	35	100	200	6.5	M6	5.31
SBR30	30	37	30	60	22.8	7	13	26.5	10.3	50°	40		200	6.5	M8	7.83
SBR35	35	43	32.5	65	26.5	8	15.5	28	13	50°	45		200	9	M8	9.88
SBR40	40	48	37.5	75	29.4	9	17	38	15.5	50°	55		300	9	M8	13.15
SBR50	50	62	47.5	95	38.8	11	21	45	20	50°	70		300	11	M10	20.4